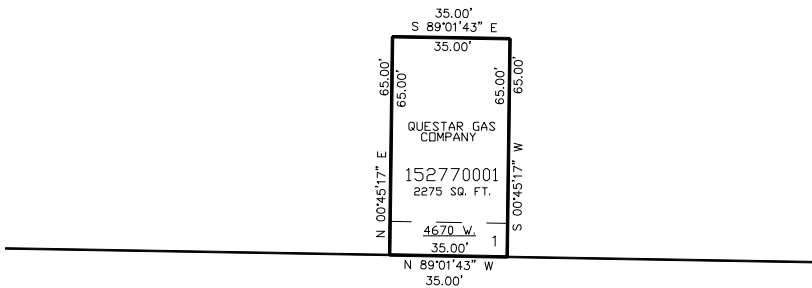


PART OF THE N.E. 1\4, OF SECTION 20, T.6N., R.2W., S.L.B. & M.  
OGDEN REG. STATION WA1356

IN WEBER COUNTY  
SCALE 1" = 30'

TAXING UNIT: 516

SEE PAGE 55



SEE PAGE 55

1150 S (HWY 39)

SEE PAGE 55



SEE PAGE 55

10' UTILITY & DRAINAGE EASEMENTS EACH  
SIDE OF PROPERTY LINES AS INDICATED  
BY DASHED LINES EXCEPT AS OTHERWISE  
SHOWN.

FOR COMPLETE ENG DATA SEE  
ORIGINAL DEDICATION PLAT IN  
BOOK 52, PAGE 86 OF RECORDS.